

Violoncello

A Selection of Manx traditional melodies from

*Kiaull yn Theay 2*

arranged for String Quartet

by Roy L Baker

1. Yn Speiy er my Gheaylin

Moderato

Musical score for 'Yn Speiy er my Gheaylin' in bass clef, 4/4 time, key of D major. The score consists of three staves. The first staff starts with a piano dynamic marking (*mp*) and a square accent. The second staff begins at measure 6. The third staff begins at measure 12 and ends with a double bar line. A fermata is placed over the final note of the piece.

2. V'ad Traaue yn Keayn

Moderato

Musical score for 'V'ad Traaue yn Keayn' in bass clef, 4/4 time, key of D major. The score consists of three staves. The first staff starts with a piano dynamic marking (*mp*) and a fermata over the first note. The second staff begins at measure 6. The third staff begins at measure 11 and ends with a double bar line.

3. Yn Chenn Dolphin

Not too fast

Musical score for 'Yn Chenn Dolphin' in bass clef, 3/4 time, key of D major. The score consists of one staff. It begins with a piano dynamic marking (*mp*) and a fermata over the first note. A large number '4' is written above the staff, indicating a four-measure rest. The piece ends with a double bar line and a fermata.

### 4. Roie Ben Yuan Tammy

A steady speed

Musical notation for '4. Roie Ben Yuan Tammy'. The piece is in 3/4 time with a key signature of two sharps (F# and C#). The first staff begins with a mezzo-piano (*mp*) dynamic. The second staff starts at measure 6 and includes a *piu rall* (more ad libitum) instruction. The piece concludes with a double bar line.

### 5. Jemmy as Nancy 2

Andante

Musical notation for '5. Jemmy as Nancy 2'. The piece is in 2/4 time with a key signature of two sharps (F# and C#). It begins with a piano (*p*) dynamic. The notation is spread across three staves, with measure numbers 6 and 12 indicated at the start of the second and third staves respectively. The piece ends with a double bar line.

### 6. Jemmy as Nancy 3

Musical notation for '6. Jemmy as Nancy 3'. The piece is in 2/2 time with a key signature of two sharps (F# and C#). It begins with a piano (*p*) dynamic. The notation is spread across three staves, with measure numbers 6 and 12 indicated at the start of the second and third staves respectively. The piece concludes with a double bar line.

## 7. I stepped up towards her

6

12

## 8. Insh dou cre t'ad Surranse er y Cheayn

Not too fast  
Like a tender Viennese waltz

6

12

## 9. O My Ghraih

Moderato, with energy

6

11

## 10. Kiark Catriney Marroo

5

9

13

## 11. My Ghraih t'ee gollrish y Ghrian

Simply, in a steady 2

7

11

## 12. The Rose upon the Brier

8

## 13. The Bonny Bunch of Roses

Not Too Fast

2

*mp*

*con sordino*

9

## 14. Yn Bollan Bane 1

A comfortable jig speed, not too fast!

*p*

*mf*

9

14

21

28

# 15. Yn Bollan Bane 2

Andante

Musical score for '15. Yn Bollan Bane 2' in bass clef, 4/4 time, key of D major. The score consists of six staves of music. The first staff begins with a mezzo-piano (*mp*) dynamic and features a series of eighth-note patterns with slurs. The second staff starts at measure 5. The third staff starts at measure 9 and includes another *mp* dynamic marking. The fourth staff starts at measure 13. The fifth staff starts at measure 17. The sixth staff starts at measure 20 and concludes the piece with a final chord.

# 16. Fairy Music Quodlibet, The Wandescoppe 1

Musical score for '16. Fairy Music Quodlibet, The Wandescoppe 1' in bass clef, 6/8 time, key of D major. The score consists of three staves of music. The first staff begins with a forte (*f*) dynamic and features dotted rhythms and rests. A sixteenth-note triplet is marked with a '6' above it. The second staff starts at measure 7 and includes a repeat sign. The third staff starts at measure 12 and concludes with a double bar line.

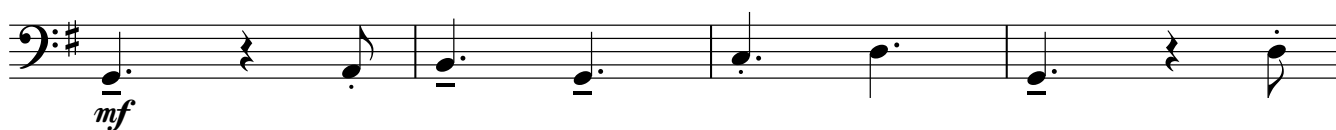
17



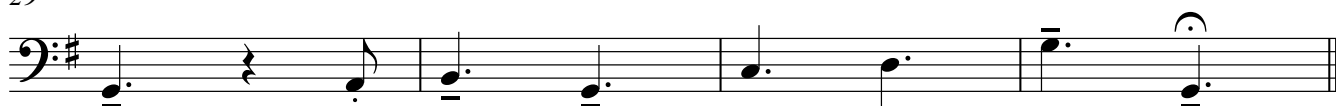
21



25

*mf*

29



## 17. Yn Unnysup 1

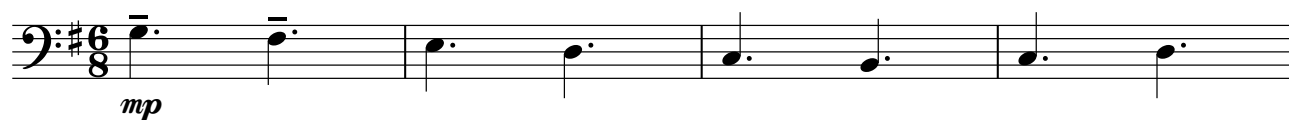
Lively but not too fast



4



## 18. Yn Unnysup 2



5



# 19. George Riley

19. George Riley

mp

5

9

13

Detailed description: This block contains the first 13 measures of the piece 'George Riley'. It is written for cello in a bass clef with a key signature of one sharp (F#) and a 4/4 time signature. The music begins with a dynamic marking of *mp* (mezzo-piano) and a breath mark (V) above the first note. The melody consists of eighth and quarter notes, some with slurs and ties. Measure numbers 5, 9, and 13 are indicated at the start of their respective lines.

# 20. The Fathaby Jig

*Allegro ma non troppo*

20. The Fathaby Jig

*Allegro ma non troppo*

*f*

5

9

15

20

Detailed description: This block contains the first 20 measures of the piece 'The Fathaby Jig'. It is written for cello in a bass clef with a key signature of one sharp (F#) and a 6/8 time signature. The music starts with a dynamic marking of *f* (forte). The tempo is marked *Allegro ma non troppo*. The melody is more rhythmic, featuring eighth and sixteenth notes with slurs. Measure numbers 5, 9, 15, and 20 are indicated at the start of their respective lines.