

Manx Christmas Melodies

Selected by Chloe Woolley, Culture Vannin

Manx Carol

by F. Quayle & S. Quilliam

Shee er Sheelnaue [Peace on Mankind]

Musical notation for 'Shee er Sheelnaue' in G major, 3/4 time. The melody is written on a single staff with a treble clef. It consists of 12 measures, ending with a double bar line.

Phillie Cain's Carol [Kiaull Vannin 282]

Untitled Manx Carval
collected from P. Cain

Musical notation for 'Phillie Cain's Carol' in G major, 3/4 time. The melody is written on a single staff with a treble clef. It consists of 12 measures, ending with a double bar line. Chord symbols are placed above the notes: D, A, G, D, A, D, A, D.

Arrane ny Mummeryn [Mummer's Song]

Manx Trad.

Musical notation for 'Arrane ny Mummeryn' in G major, 3/4 time. The melody is written on a single staff with a treble clef. It consists of 12 measures, ending with a double bar line. A small asterisk is placed above the final note.

Oikan ayns Bethlehem [Birth in Bethlehem]

Manx Trad.

Musical notation for 'Oikan ayns Bethlehem' in G major, 6/8 time. The melody is written on a single staff with a treble clef. It consists of 12 measures, ending with a double bar line. Chord symbols are placed above the notes: Em, Bm, Em, Bm, Em.

Cadlee ny Moidyn Moirrey [Lullaby of the Virgin Mary]

Manx Trad.

Musical notation for 'Cadlee ny Moidyn Moirrey' in G major, 6/8 time. The melody is written on a single staff with a treble clef. It consists of 12 measures, ending with a double bar line.

* = altered note - C. Woolley

Manx Christmas Melodies

Selected by C. Woolley, Manx Heritage Foundation

Yeesey Creest [Jesus Christ]

Manx Carol
by R.C. Carswell

Musical score for 'Yeesey Creest [Jesus Christ]' in 3/4 time, key of D major. The score consists of three staves of music with guitar chords indicated above the notes. The chords are: D, G, A, D, D, G; A, D, G, A, D, G, A, D, G, A; D, Em, A, D, G, A, D.

Caley's Carol [Kiavull Vannin 271]

Untitled Manx Carval
collected from T. Caley

Musical score for 'Caley's Carol [Kiavull Vannin 271]' in 4/4 time, key of D major. The score consists of three staves of music with guitar chords indicated above the notes. The chords are: G, D, G, C, D, G; D, G, C, D, G, G, C, D; G, D, G, D, G, C, D, G. A note in the second staff is marked with an asterisk and the text '* altered note'.

Hunt the Wren

Lively

Manx Trad.
Dance tune

Musical score for 'Hunt the Wren' in 6/8 time, key of D major. The score consists of four staves of music. The first staff is marked 'Lively'. The second staff ends with the word 'Fine'. The fourth staff ends with the instruction 'D.C. al Fine'.

Manx Christmas Melodies

Selected by C. Woolley, Manx Heritage Foundation

3

O S'feayr yn Gheay [Cold Blows the Wind]

Manx Carol
by M.L. Wood

Musical notation for the Manx Carol 'O S'feayr yn Gheay'. It consists of three staves of music in treble clef, key of D major (one sharp), and 6/8 time signature. The melody is written across the staves with various note values and rests.

She Shoh yn Laa [This is the Day]

Manx Trad.

Musical notation for the Manx Trad. 'She Shoh yn Laa'. It consists of two staves of music in treble clef, key of D major (one sharp), and 3/4 time signature. The melody is written across the staves with various note values and rests.

Cheayll mee yn Coraa Yeesey Gra [I Heard the Voice of Jesus Say]

Manx Trad.

Musical notation for the Manx Trad. 'Cheayll mee yn Coraa Yeesey Gra'. It consists of four staves of music in treble clef, key of B-flat major (two flats), and common time (C). The melody is written across the staves with various note values and rests.

Manx Christmas Melodies

Selected by C. Woolley, Manx Heritage Foundation

4

Carval Joseph [Joseph's Carol]

Manx Trad.

Musical notation for 'Carval Joseph [Joseph's Carol]'. The piece is in G major (one sharp) and 3/4 time. It consists of three staves of music. The first staff begins with a treble clef and a key signature of one sharp. The melody is written in a simple, folk style with quarter and eighth notes. The second staff continues the melody with a long note and a slur. The third staff concludes the piece with a double bar line.

The Stranger

Manx Carol
by P. Leighton Stowell

Musical notation for 'The Stranger'. The piece is in G major (one sharp) and 3/4 time. It consists of three staves of music. The first staff begins with a treble clef and a key signature of one sharp. The melody is written in a simple, folk style with quarter and eighth notes. The second staff continues the melody with a long note and a slur. The third staff concludes the piece with a double bar line.

Carval ny Guillyn Bane [Carol of the White Boys]

Manx Trad.

Lively

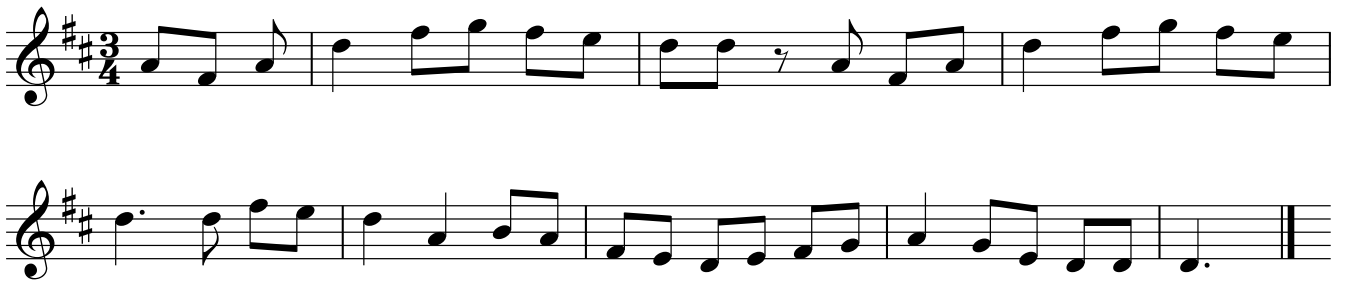
Musical notation for 'Carval ny Guillyn Bane [Carol of the White Boys]'. The piece is in G major (one sharp) and 6/8 time. It consists of five staves of music. The first staff begins with a treble clef and a key signature of one sharp. The melody is written in a lively, folk style with eighth and sixteenth notes. The second staff continues the melody with a long note and a slur. The third staff continues the melody with a long note and a slur. The fourth staff continues the melody with a long note and a slur. The fifth staff concludes the piece with a double bar line.

Manx Christmas Melodies

Selected by C. Woolley, Manx Heritage Foundation

Ec Nollick Ball ny Fiddleryn [At the Fiddler's Christmas Ball]

Manx Trad.



Three Little Boats went out to Sea [On Christmas Day]

A min version

Manx Trad.



Daunse Noo George [St. George's Dance]

Sword dance from 'The White Boys' - Mummers Play

By P. Leighton Stowell

